

## S31BAC-P07MFG0-6000

odu\_mini\_snap®\_series\_b

### straight\_push\_pull\_plug

size: 1, IP68, keying: a, number\_of\_contacts: 7, solder\_cup, contact\_type: pins, Signal



#### Basic information

|                    |                     |
|--------------------|---------------------|
| Part number        | S31BAC-P07MFG0-6000 |
| Category           | connector           |
| Type of connector  | plug                |
| Assembly situation | straight            |
| Size               | 1                   |

#### Contact insert description

|                        |            |
|------------------------|------------|
| Transmission type      | Signal     |
| Number of contacts     | 7          |
| Contact type           | pins       |
| Contact diameter       | 0.7 mm     |
| Termination type       | solder_cup |
| Termination diameter   | 0.85 mm    |
| Wire cross section AWG | AWG 22     |

#### Technical information

|  |                             |  |
|--|-----------------------------|--|
| Nominal current single contact               | 7.5 A                       | IEC 60512-5-2:2002 (DIN EN 60512-5-2:2003) |
| Max. current insert                          | 4.875                       | VDE 0298-4:2003                            |
| Test voltage                                 | 1 kV AC                     | SAE AS 13441:1998 method 3001.1            |
| Max. creepage distance (contact to contact)  | 0.7 mm (Contact to housing) |  |
| Max. creepage distance (contact to housing)  | 1.0 mm (Contact to housing) |  |
| Max. clearance distance (contact to contact) | 0.7 mm (Contact to contact) |  |
| Max. clearance distance (contact to housing) | 1.0 mm (Contact to housing) |  |

#### Cable description

|                     |          |
|---------------------|----------|
| Cable outlet        | back_nut |
| Min. cable diameter | 5.5      |
| Max. cable diameter | 6        |

## Mechanical and environmental data

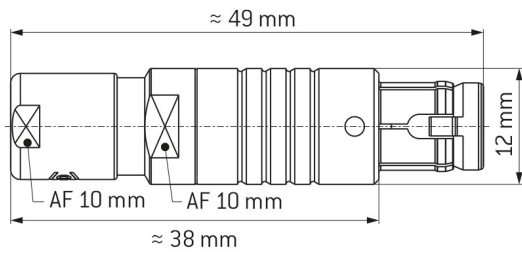
|                            |           |
|----------------------------|-----------|
| Locking principle          | push_pull |
| Keying                     | a         |
| Mating cycles              | 5000      |
| IP class                   | IP68      |
| Max. operating temperature | 120 °C    |
| Min. operating temperature | -40 °C    |

ip\_protection\_class\_refers\_to\_mated\_condition

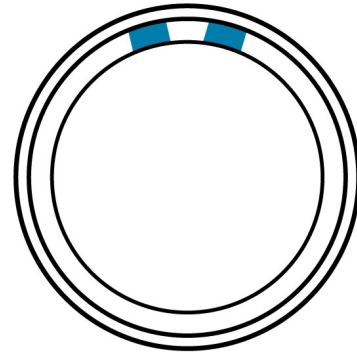
## Material and surface treatments

|                    |                                  |
|--------------------|----------------------------------|
| Material           | cu_alloy_with_matt_chrome_finish |
| Insulator material | peek                             |
| Contact material   | cu_alloy_with_gold_finish        |

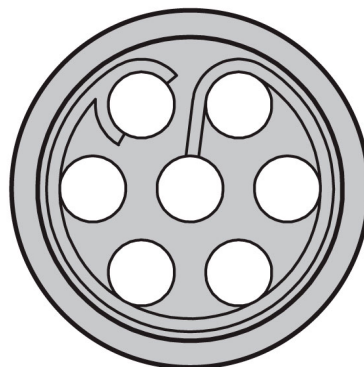
### DIMENSIONS:



### CODING: 30°



### POSITIONS: 7 Positions



### Further technical information and downloads

[3D-File \[STP File\]](#)

[Assembly Instruction](#)