

## S31BOC-P16MCCO-7000

odu\_mini\_snap®\_series\_b

### straight\_push\_pull\_plug

size: 1, IP68, keying: 0, number\_of\_contacts: 16, solder\_cup, contact\_type: pins, Signal



#### Basic information

Part number	S31BOC-P16MCCO-7000
Category	connector
Type of connector	plug
Assembly situation	straight
Size	1

#### Contact insert description

Transmission type	Signal
Number of contacts	16
Contact type	pins
Contact diameter	0.5 mm
Termination type	solder_cup
Termination diameter	0.45 mm
Wire cross section AWG	AWG 28

#### Technical information

Nominal current single contact	4 A	IEC 60512-5-2:2002 (DIN EN 60512-5-2:2003)
Max. current insert	2	VDE 0298-4:2003
Test voltage	0.9 kV AC	SAE AS 13441:1998 method 3001.1
Max. creepage distance (contact to contact)	0.4 mm (Contact to housing)	
Max. creepage distance (contact to housing)	0.9 mm (Contact to housing)	
Max. clearance distance (contact to contact)	0.4 mm (Contact to contact)	
Max. clearance distance (contact to housing)	0.9 mm (Contact to housing)	

#### Cable description

Cable outlet	back_nut
Min. cable diameter	6.5
Max. cable diameter	7

## Mechanical and environmental data

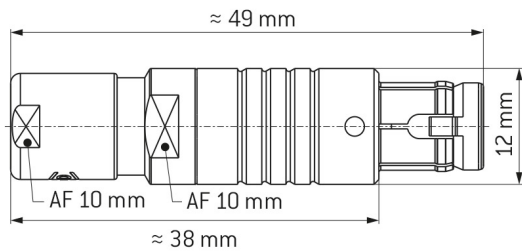
<b>Locking principle</b>	push_pull
<b>Mating cycles</b>	5000
<b>IP class</b>	IP68
<b>Max. operating temperature</b>	120 °C
<b>Min. operating temperature</b>	-40 °C

ip\_protection\_class\_refers\_to\_mated\_condition

## Material and surface treatments

<b>Material</b>	cu_alloy_with_matt_chrome_finish
<b>Insulator material</b>	peek
<b>Contact material</b>	cu_alloy_with_gold_finish

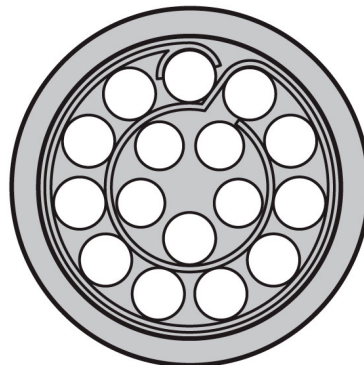
### DIMENSIONS:



### CODING: 0°



### POSITIONS: 16 Positions



### Further technical information and downloads

[3D-File \[STP File\]](#)

[Assembly Instruction](#)