

S31B0C-P04MJG0-7000

odu_mini_snap®_series_b

straight_push_pull_plug

size: 1, IP68, keying: 0, number_of_contacts: 4, solder_cup, contact_type: pins, Ethernet/IP®
(100 Mbit/s)

ODU EXPRESS



Basic information

| | |
|--------------------|---------------------|
| Part number | S31B0C-P04MJG0-7000 |
| Category | connector |
| Type of connector | plug |
| Assembly situation | straight |
| Size | 1 |

Contact insert description

| | |
|------------------------|---------------------------|
| Special features | data_transmission |
| Transmission type | Ethernet/IP® (100 Mbit/s) |
| Number of contacts | 4 |
| Contact type | pins |
| Contact diameter | 0.9 mm |
| Termination type | solder_cup |
| Termination diameter | 0.85 mm |
| Wire cross section AWG | AWG 22 |

Technical information

| | | |
|--|-----------------------------|--|
| Nominal current single contact | 7.5 A | IEC 60512-5-2:2002 (DIN EN 60512-5-2:2003) |
| Max. current insert | 7.5 | VDE 0298-4:2003 |
| Test voltage | 1.5 kV AC | SAE AS 13441:1998 method 3001.1 |
| Max. creepage distance (contact to contact) | 1 mm (Contact to housing) | |
| Max. creepage distance (contact to housing) | 1.4 mm (Contact to housing) | |
| Max. clearance distance (contact to contact) | 1.0 mm (Contact to contact) | |
| Max. clearance distance (contact to housing) | 1.4 mm (Contact to housing) | |

Cable description

| | |
|---------------------|----------|
| Cable outlet | back_nut |
| Min. cable diameter | 6.5 |
| Max. cable diameter | 7 |

Mechanical and environmental data

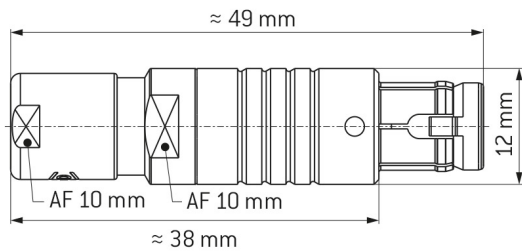
| | |
|----------------------------|-----------|
| Locking principle | push_pull |
| Mating cycles | 5.000 |
| IP class | IP68 |
| Max. operating temperature | 120 °C |
| Min. operating temperature | -40 °C |
| Weight | 19.25 g |

ip_protection_class_refers_to_mated_condition

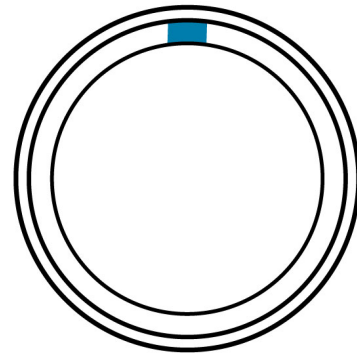
Material and surface treatments

| | |
|------------------|----------------------------------|
| Material | cu_alloy_with_matt_chrome_finish |
| Contact material | cu_alloy_with_gold_finish |

DIMENSIONS:



CODING: 0°



POSITIONS: 4 Positions



Further technical information and downloads

Connection diagram

[connection_diagram_4_pin_ethernet_100Mbps_rj45](#)

[3D-File \(STP File\)](#)

[Assembly Instruction](#)