

straight_push_pull_plug

size: 0, IP68, keying: a, number_of_contacts: 5, solder_cup, contact_type: pins, Signal

**Basic information**

| | |
|--------------------|---------------------|
| Part number | S30BAC-P05MFD0-3500 |
| Category | connector |
| Type of connector | plug |
| Assembly situation | straight |

Contact insert description

| | |
|------------------------|------------|
| Transmission type | Signal |
| Number of contacts | 5 |
| Contact type | pins |
| Contact diameter | 0.7 mm |
| Termination type | solder_cup |
| Termination diameter | 0.65 mm |
| Wire cross section AWG | AWG 26 |

Technical information

| | | |
|--|-----------------------------|--|
| Nominal current single contact | 6 A | IEC 60512-5-2:2002 (DIN EN 60512-5-2:2003) |
| Max. current insert | 4.5 | VDE 0298-4:2003 |
| Test voltage | 1.1 kV AC | SAE AS 13441:1998 method 3001.1 |
| Max. creepage distance (contact to contact) | 0.7 mm (Contact to housing) | |
| Max. creepage distance (contact to housing) | 0.8 mm (Contact to housing) | |
| Max. clearance distance (contact to contact) | 0.7 mm (Contact to contact) | |
| Max. clearance distance (contact to housing) | 0.8 mm (Contact to housing) | |

Cable description

| | |
|---------------------|----------|
| Cable outlet | back_nut |
| Min. cable diameter | 3 |
| Max. cable diameter | 3.5 |

Mechanical and environmental data

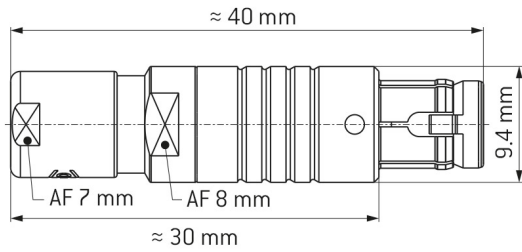
| | |
|----------------------------|-----------|
| Locking principle | push_pull |
| Keying | a |
| Mating cycles | 5000 |
| IP class | IP68 |
| Max. operating temperature | 120 °C |
| Min. operating temperature | -40 °C |

ip_protection_class_refers_to_mated_condition

Material and surface treatments

| | |
|--------------------|----------------------------------|
| Material | cu_alloy_with_matt_chrome_finish |
| Insulator material | peek |
| Contact material | cu_alloy_with_gold_finish |

DIMENSIONS:



CODING: 30°



POSITIONS: 5 Positions



Further technical information and downloads

[3D-File \[STP File\]](#)

[Assembly Instruction](#)