

**straight\_push\_pull\_plug**

size: 0, IP68, keying: 0, number\_of\_contacts: 4, solder\_cup, contact\_type: pins, Ethernet/IP®  
[100 Mbit/s]

**Basic information**

|                    |                     |
|--------------------|---------------------|
| Part number        | S30B0C-P04MFG0-5000 |
| Category           | connector           |
| Type of connector  | plug                |
| Assembly situation | straight            |

**Contact insert description**

|                        |                           |
|------------------------|---------------------------|
| Special features       | data_transmission         |
| Transmission type      | Ethernet/IP® [100 Mbit/s] |
| Number of contacts     | 4                         |
| Contact type           | pins                      |
| Contact diameter       | 0.7 mm                    |
| Termination type       | solder_cup                |
| Termination diameter   | 1.1 mm                    |
| Wire cross section AWG | AWG 22                    |

**Technical information**

|  |                             |  |
|--|-----------------------------|--|
| Max. current single contact                  | 7.5 A                       | IEC 60512-5-2:2002 (DIN EN 60512-5-2:2003) |
| Max. current insert                          | 7.5                         | VDE 0298-4:2003                            |
| Test voltage                                 | 0.9 kV AC                   | SAE AS 13441:1998 method 3001.1            |
| Max. creepage distance (contact to contact)  | 0.6 mm (Contact to housing) |  |
| Max. creepage distance (contact to housing)  | 0.8 mm (Contact to housing) |  |
| Max. clearance distance (contact to contact) | 0.6 mm (Contact to contact) |  |
| Max. clearance distance (contact to housing) | 0.8 mm (Contact to housing) |  |

## Cable description

|                     |          |
|---------------------|----------|
| Cable outlet        | back_nut |
| Min. cable diameter | 4.5      |
| Max. cable diameter | 5        |

## Mechanical and environmental data

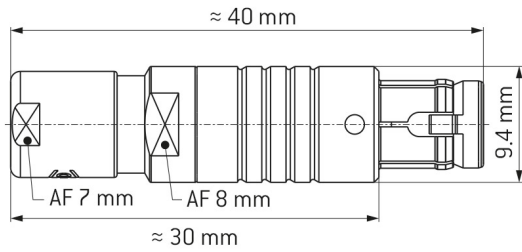
|                            |           |
|----------------------------|-----------|
| Locking principle          | push_pull |
| Mating cycles              | 5.000     |
| IP class                   | IP68      |
| Max. operating temperature | 120 °C    |
| Min. operating temperature | -40 °C    |
| Weight                     | 10.14 g   |

ip\_protection\_class\_refers\_to\_mated\_condition

## Material and surface treatments

|                  |                                  |
|------------------|----------------------------------|
| Material         | cu_alloy_with_matt_chrome_finish |
| Contact material | gold                             |

### DIMENSIONS:



### CODING: 0°



### POSITIONS: 4 Positions



#### Further technical information and downloads

Connection diagram

[connection\\_diagram\\_4\\_pin\\_ethernet\\_100Mbps\\_rj45](#)

[3D-File \(STP File\)](#)

[Assembly Instruction](#)