

## straight\_push\_pull\_plug\_for\_bend\_relief

size: 3, IP68, keying: 0, number\_of\_contacts: 30, solder\_cup, contact\_type: pins, Signal



### Basic information

Part number	S23K0C-P30MFG0-350S
Category	connector
Type of connector	plug
Assembly situation	straight
Size	3

### Contact insert description

Transmission type	Signal
Number of contacts	30
Contact type	pins
Contact diameter	0.7 mm
Termination type	solder_cup
Termination diameter	0.85 mm
Wire cross section AWG	AWG 22

### Technical information

Max. current single contact	7.5 A	IEC 60512-5-2:2002 (DIN EN 60512-5-2:2003)
Test voltage	0.9 kV AC	SAE AS 13441:1998 method 3001.1
Max. creepage distance (contact to contact)	0.4 mm (Contact to housing)	
Max. creepage distance (contact to housing)	0.7 mm (Contact to housing)	
Max. clearance distance (contact to contact)	0.4 mm (Contact to contact)	
Max. clearance distance (contact to housing)	0.7 mm (Contact to housing)	

### Cable description

Cable outlet	cable_bend_relief
Min. cable diameter	3
Max. cable diameter	3.5

## Mechanical and environmental data

<b>Locking principle</b>	push_pull
<b>Mating cycles</b>	5000
<b>IP class</b>	IP68
<b>Max. operating temperature</b>	120 °C
<b>Min. operating temperature</b>	-40 °C

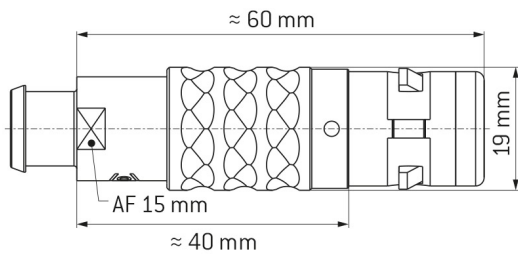
ip\_protection\_class\_refers\_to\_mated\_condition

## Material and surface treatments

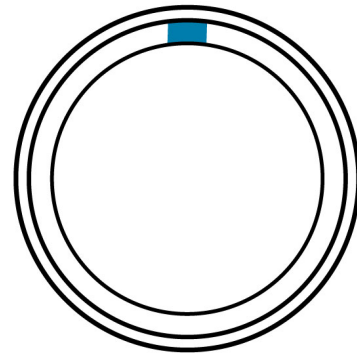
<b>Material</b>	cu_alloy_with_matt_chrome_finish
<b>Insulator material</b>	peek
<b>Contact material</b>	cu_alloy_with_gold_finish

## Graphics and technical drawings

### DIMENSIONS:



### CODING: 0°



### POSITIONS: 30 positions



## Further technical information and downloads

[3D-File \[STP File\]](#)

[Assembly Instruction](#)

[Technical specifications](#)