

S23K0C-P20PFC0-800S

odu_mini_snap®_series_k

straight_push_pull_plug_for_bend_relief

size: 3, IP68, keying: 0, number_of_contacts: 20, crimp, contact_type: pins, Signal



Basic information

Part number	S23K0C-P20PFC0-800S
Category	connector
Type of connector	plug
Assembly situation	straight
Size	3

Contact insert description

Transmission type	Signal
Number of contacts	20
Contact type	pins
Contact diameter	0.7 mm
Termination type	crimp
Wire cross section AWG	AWG 28 – 32

Crimp contacts

Please refer to the installed contacts for the correct crimp settings and the tools to be used.

[185.434.000.207.000](tel:185.434.000.207.000)

Technical information

Max. current single contact	6 A	IEC 60512-5-2:2002 (DIN EN 60512-5-2:2003)
Max. current insert	2.7	VDE 0298-4:2003
Test voltage	1.1 kV AC	SAE AS 13441:1998 method 3001.1
Max. creepage distance (contact to contact)	1 mm (Contact to housing)	
Max. creepage distance (contact to housing)	1.1 mm (Contact to housing)	
Max. clearance distance (contact to contact)	1.0 mm (Contact to contact)	
Max. clearance distance (contact to housing)	1.1 mm (Contact to housing)	

Cable description

Cable outlet	cable_bend_relief
Min. cable diameter	7.5
Max. cable diameter	8

Mechanical and environmental data

Locking principle	push_pull
Mating cycles	5.000
IP class	IP68
Max. operating temperature	120 °C
Min. operating temperature	-40 °C
Weight	333.15 g

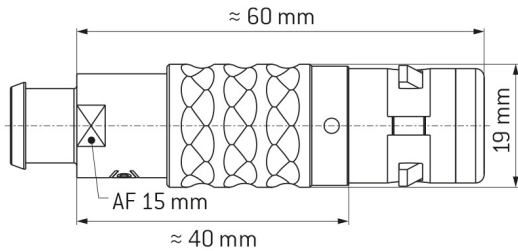
ip_protection_class_refers_to_mated_condition

Material and surface treatments

Material	cu_alloy_with_matt_chrome_finish
Contact material	gold

Graphics and technical drawings

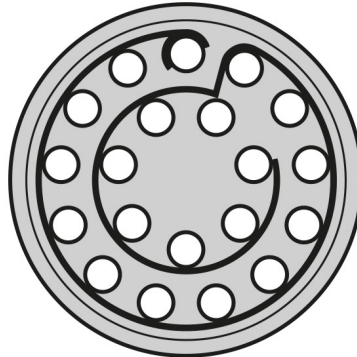
DIMENSIONS:



CODING: 0°



POSITIONS: 20 positions



Further technical information and downloads

[3D-File \[STP File\]](#)

[Assembly Instruction](#)

[Technical specifications](#)