

## S11F1C-P04MJG0-7500

odu\_mini\_snap®\_series\_f

### straight\_push\_pull\_plug

size: 1, IP50, keying: 1, number\_of\_contacts: 4, solder\_cup, contact\_type: pins, Signal



#### Basic information

|                    |                     |
|--------------------|---------------------|
| Part number        | S11F1C-P04MJG0-7500 |
| Category           | connector           |
| Type of connector  | plug                |
| Assembly situation | straight            |
| Size               | 1                   |

#### Contact insert description

|                        |            |
|------------------------|------------|
| Transmission type      | Signal     |
| Number of contacts     | 4          |
| Contact type           | pins       |
| Contact diameter       | 0.9 mm     |
| Termination type       | solder_cup |
| Termination diameter   | 0.85 mm    |
| Wire cross section AWG | AWG 22     |

#### Technical information

|  |                             |  |
|--|-----------------------------|--|
| Max. current single contact                  | 7.5 A                       | IEC 60512-5-2:2002 (DIN EN 60512-5-2:2003) |
| Max. current insert                          | 7.5                         | VDE 0298-4:2003                            |
| Test voltage                                 | 1.5 kV AC                   | SAE AS 13441:1998 method 3001.1            |
| Max. creepage distance (contact to contact)  | 1.2 mm (Contact to housing) |  |
| Max. creepage distance (contact to housing)  | 0.8 mm (Contact to housing) |  |
| Max. clearance distance (contact to contact) | 1.2 mm (Contact to contact) |  |
| Max. clearance distance (contact to housing) | 0.8 mm (Contact to housing) |  |

#### Cable description

|                     |          |
|---------------------|----------|
| Cable outlet        | back_nut |
| Min. cable diameter | 7        |
| Max. cable diameter | 7.5      |

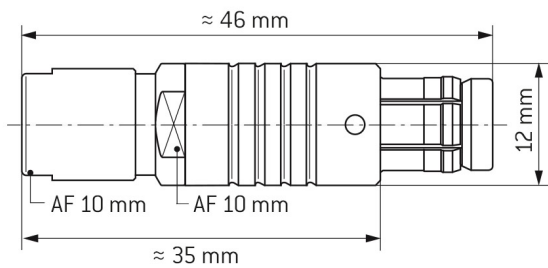
## Mechanical and environmental data

|                            |           |
|----------------------------|-----------|
| Locking principle          | push_pull |
| Keying                     | 1         |
| Mating cycles              | 5.000     |
| IP class                   | IP50      |
| Max. operating temperature | 120 °C    |
| Min. operating temperature | -40 °C    |
| Weight                     | 9.999 g   |

## Material and surface treatments

|                  |                                  |
|------------------|----------------------------------|
| Material         | cu_alloy_with_matt_chrome_finish |
| Contact material | gold                             |

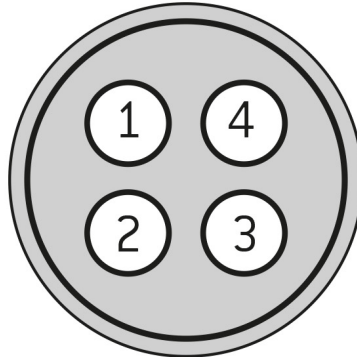
### DIMENSIONS:



### CODING: 1



### POSITIONS: 4 positions



### Further technical information and downloads

[3D-File \[STP File\]](#)

[Assembly Instruction](#)