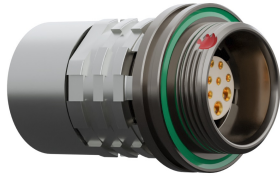


**straight\_in\_line\_receptacle\_with\_screw\_lock\_for\_bend\_relief**

size\_1\_ip6k8\_ip6k9k\_coding\_d\_green\_20\_contacts\_sockets\_solder\_cup\_data\_transmission\_and\_high\_power\_ethernet®\_1\_gbits+\_power



**Basic information**

Part number	KC1WDM-P20WMM0-0000
Category	connector
Type of connector	in_line_receptacle
Assembly situation	straight
Size	1

**Contact insert description**

Special features	data_transmission
Number of contacts	20
Contact type	sockets
Contact diameter	0.3 mm; 0.7 mm
Termination type	solder_cup
Termination diameter	0.85 mm
Wire cross section AWG	AWG 28; AWG 22

**Technical information**

Max. current single contact	1 A	IEC 60512-5-2:2002 (DIN EN 60512-5-2:2003)
Test voltage	0.75 kV DC	EIA-364-20F:2019-02

**Cable description**

Cable outlet	overmolding
Min. cable diameter	3.2
Max. cable diameter	8.5

## Mechanical and environmental data

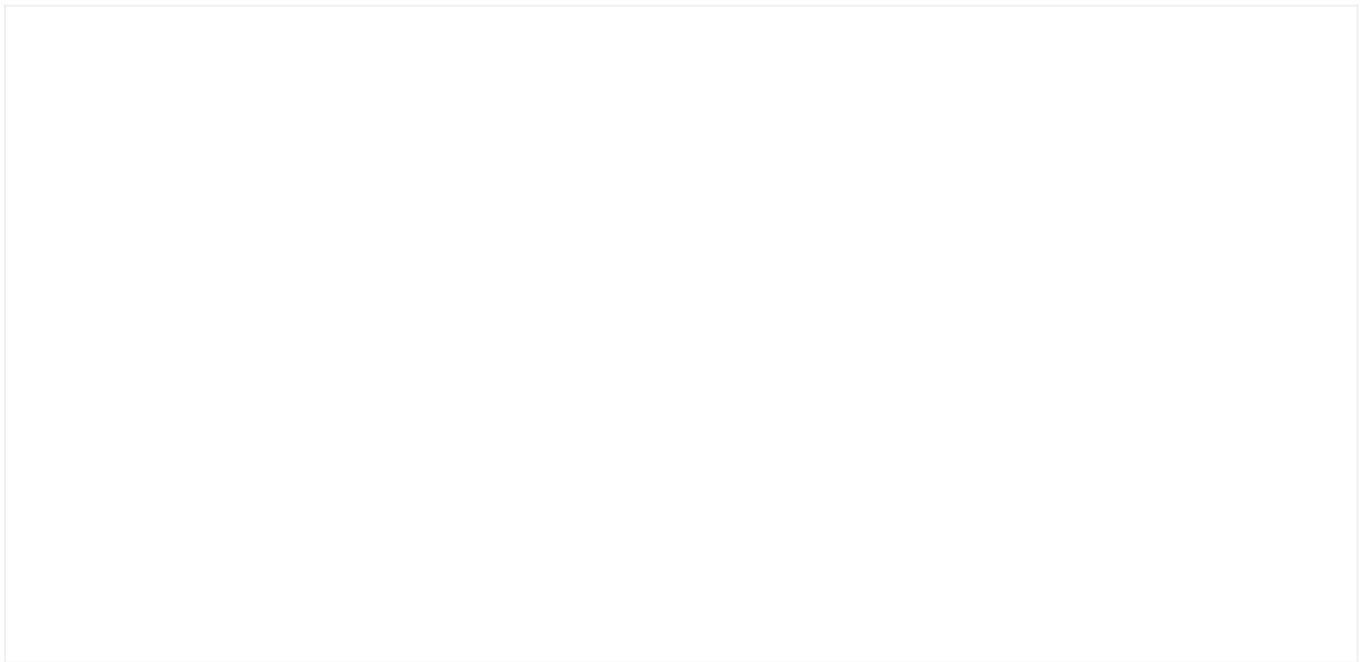
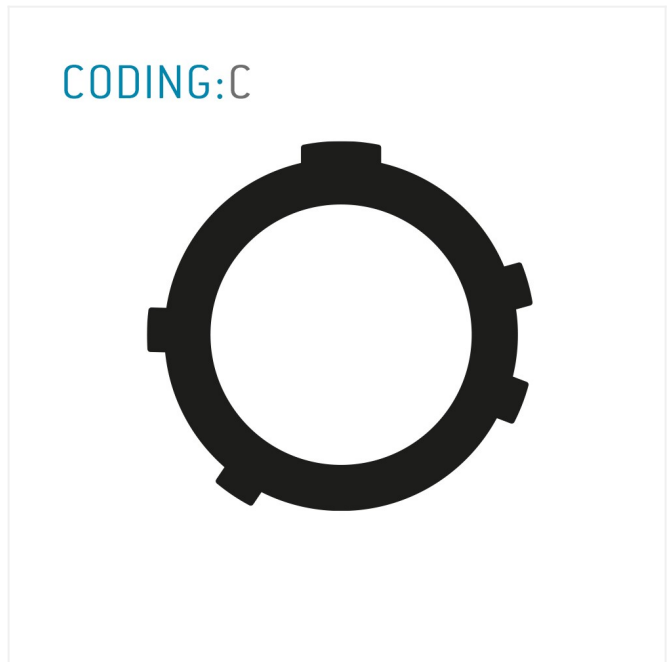
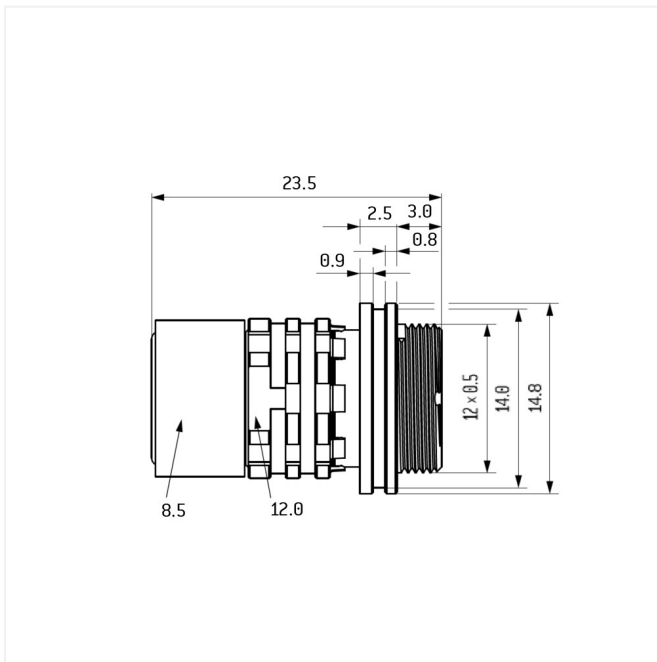
<b>Locking principle</b>	screw_lock
<b>Keying</b>	d
<b>Mating cycles</b>	5.000
<b>IP class</b>	IP68 / IP6K9K
<b>Max. operating temperature</b>	125 °C
<b>Min. operating temperature</b>	-51 °C
<b>Weight</b>	9.999 g

ip\_protection\_class\_refers\_to\_mated\_condition

## Material and surface treatments

<b>Material</b>	cu_alloy_with_ruthenium_finish
<b>Contact material</b>	gold

## Graphics and technical drawings



## Further technical information and downloads

[3D-File \(STP File\)](#)

[Assembly Instruction](#)

[Technical specifications](#)