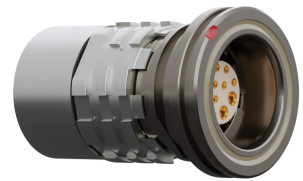


General information

| | |
|-------------------|---------------------|
| Part number | K1CWAM-P02WCE0-0000 |
| Termination | solder |
| Size | 00 |
| Locking principle | break |
| Coding | a_key_amc |
| Cable Diameter | cable_amchd_C |
| Cable outlet | overmolding |



Illustrations may differ from original product. Dimensions, unless otherwise specified, in mm.

CODING:A

POSITIONS: 2 positions

DIMENSIONS:

The pin layout corresponds to the view on the termination area

Contact insert description

| | |
|--------------------|---------|
| Number of contacts | 2 |
| Contact type | sockets |
| Contact diameter | 05mm |
| Insulator material | peek |
| Wire cross section | 24_awg |
| Termination | solder |

reverse_gender_on_request

Technical information

| | | |
|--------------------------------|----------|---------------|
| Nominal current single contact | 03_a | iec_60512_5_2 |
| Nominal current insert | 3 A | vde_0298_4 |
| Test voltage | 12_kv_dc | eia_364_20f |

safety_text

Mechanical and environmental data

| | |
|-----------------------|--------------|
| Degree of protection* | ipsk8_ip6k9k |
| Operating temperature | 51_125_c |
| Mating cycles | 5000 |

mated

Material and surface treatments

| | |
|----------------|---------------|
| Housing | ruthenium |
| Contact | cu_alloy_gold |

safety_text_2
ul_text
illustrative_text