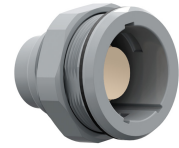
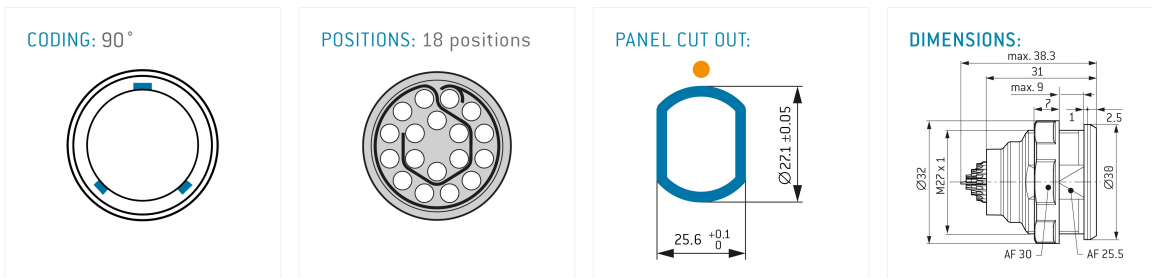


### General information

|                   |                     |
|-------------------|---------------------|
| Part number       | GXBMFG-P18LJH0-0002 |
| Termination       | solder              |
| Size              | 3,5                 |
| Locking principle | push                |
| Coding            | f_key_medi          |



Illustrations may differ from original product.  
Dimensions, unless otherwise specified, in mm.



The pin layout corresponds to the view on the termination area

### Contact insert description

|                      |         |
|----------------------|---------|
| Number of contacts   | 18      |
| Contact type         | sockets |
| Contact diameter     | 09mm    |
| Insulator material   | peek    |
| Wire cross section   | 20_awg  |
| Termination          | solder  |
| Termination diameter | 11mm    |

### Technical information

|  |           |                       |
|--|-----------|-----------------------|
| Max. creepage and air clearance distance | 07_mm     | iec_60601_2mopp_2moop |
| Nominal current single contact           | 10_a      | iec_60512_5_2         |
| Nominal current insert                   | 5 A       | vde_0298_4            |
| Test voltage                             | 125_kv_ac | eia_364_20f           |

safety\_text  
iec\_60601\_receptacle

## Mechanical and environmental data

|                       |          |
|-----------------------|----------|
| Degree of protection* | ip68     |
| Operating temperature | 50_120_c |
| Mating cycles         | 5000     |

mated\_unmated

## Insulator materials MEDI-SNAP®

pei\_peek\_size\_b\_o\_a

## Material and surface treatments

|         |               |
|---------|---------------|
| Housing | pei_gray      |
| Contact | cu_alloy_gold |

safety\_text\_2  
data\_text  
ul\_text  
illustrative\_text