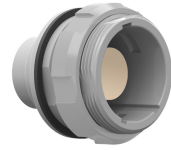


**GXBMFG-P18LJH0-0001**  
**medi\_snap, type\_gd**



**General information**

<b>Part number</b>	GXBMFG-P18LJH0-0001
<b>Termination</b>	solder
<b>Size</b>	3,5
<b>Locking principle</b>	push
<b>Coding</b>	f_key_medi



Illustrations may differ from original product.  
 Dimensions, unless otherwise specified, in mm.

<p><b>CODING:</b> 90°</p>	<p><b>POSITIONS:</b> 18 positions</p>	<p><b>PANEL CUT OUT:</b></p>	<p><b>DIMENSIONS:</b></p>
---------------------------	---------------------------------------	------------------------------	---------------------------

The pin layout corresponds to the view on the termination area

**Contact insert description**

<b>Number of contacts</b>	18
<b>Contact type</b>	sockets
<b>Contact diameter</b>	09mm
<b>Insulator material</b>	peek
<b>Wire cross section</b>	20_awg
<b>Termination</b>	solder
<b>Termination diameter</b>	11mm

**Technical information**

<b>Max. creepage and air clearance distance</b>	07_mm	iec_60601_2mopp_2moop
<b>Nominal current single contact</b>	10_a	iec_60512_5_2
<b>Nominal current insert</b>	5 A	vde_0298_4
<b>Test voltage</b>	125_kv_ac	eia_364_20f

safety\_text  
 iec\_60601\_receptacle

## Mechanical and environmental data

Degree of protection*	ip68
Operating temperature	50_120_c
Mating cycles	5000

mated\_unmated

## Insulator materials MEDI-SNAP®

pei\_peek\_size\_b\_o\_a

## Material and surface treatments

Housing	pei_gray
Color option	gray
Contact	cu_alloy_gold

safety\_text\_2  
data\_text  
ul\_text  
illustrative\_text