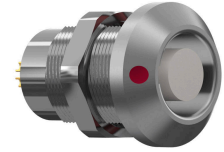


General information

|                   |                     |
|-------------------|---------------------|
| Part number       | GL1LOC-P05QJ00-0000 |
| Termination       | pcb                 |
| Size              | 1                   |
| Locking principle | break , push        |
| Coding            | 0_key               |



Illustrations may differ from original product. Dimensions, unless otherwise specified, in mm.

**CODING:** 0°

**POSITIONS:** 5 Positions

**PANEL CUT OUT:**

**DIMENSIONS:**

The pin layout corresponds to the view on the termination area

Contact insert description

|                      |         |
|----------------------|---------|
| Number of contacts   | 5       |
| Contact type         | sockets |
| Contact diameter     | 09mm    |
| Insulator material   | peek    |
| Termination          | pcb     |
| Termination diameter | 07mm    |

reverse\_gender\_on\_request

Technical information

|  |           |               |
|--|-----------|---------------|
| Max. creepage and air clearance distance | 09_mm     | 12_mm         |
| Nominal current single contact           | 075_a     | iec_60512_5_2 |
| Nominal current insert                   | 5,625 A   | vde_0298_4    |
| Test voltage                             | 135_kv_ac | sae_13441     |

safety\_text

Mechanical and environmental data

|                       |          |
|-----------------------|----------|
| Degree of protection* | ip68     |
| Operating temperature | 40_120_c |
| Mating cycles         | 5000     |

unmated

## Material and surface treatments

|                |               |
|----------------|---------------|
| <b>Housing</b> | m_chrome      |
| <b>Contact</b> | cu_alloy_gold |

safety\_text\_2  
ul\_text  
illustrative\_text