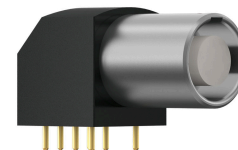


General information

Part number	GFOLOC-P05QF00-0000
Termination	pcb
Size	0
Locking principle	break , push
Coding	0_key



Illustrations may differ from original product.
Dimensions, unless otherwise specified, in mm.

<p>CODING: 0°</p>	<p>POSITIONS: 5 Positions</p>	<p>PANEL CUT OUT:</p>	<p>DIMENSIONS:</p>	<p>PCB-LAYOUT:</p> <p>Contact borehole 0.8 mm Fastening borehole 0.8 mm</p>
--------------------------	--------------------------------------	------------------------------	---------------------------	--

The pin layout corresponds to the view on the termination area

Contact insert description

Number of contacts	5
Contact type	sockets
Contact diameter	07mm
Insulator material	peek
Termination	pcb
Termination diameter	05mm

reverse_gender_on_request

Technical information

Max. creepage and air clearance distance	07_mm	08_mm
Nominal current single contact	06_a	iec_60512_5_2
Nominal current insert	4,5 A	vde_0298_4
Test voltage	11_kv_ac	sae_13441

safety_text

Mechanical and environmental data

Degree of protection*	ip50
Operating temperature	40_120_c
Mating cycles	5000

mated_unmated

Material and surface treatments

Housing	m_chrome
Contact	cu_alloy_gold

safety_text_2
ul_text
illustrative_text