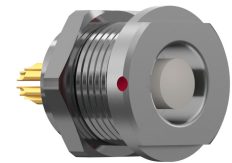


General information

Part number	GE1BOC-P10QC00-0000
Termination	pcb
Size	1
Locking principle	break , push
Coding	0_key



Illustrations may differ from original product.  
Dimensions, unless otherwise specified, in mm.

**CODING:** 0°

**POSITIONS:** 10 Positions

**PANEL CUT OUT:**

**PCB-LAYOUT:**

The pin layout corresponds to the view on the termination area

Contact insert description

Number of contacts	10
Contact type	sockets
Contact diameter	05mm
Insulator material	peek
Termination	pcb
Termination diameter	05mm

reverse\_gender\_on\_request

Technical information

Max. creepage and air clearance distance	05_mm	12_mm
Nominal current single contact	04_a	iec_60512_5_2
Nominal current insert	2,2 A	vde_0298_4
Test voltage	1_kv_ac	sae_13441

safety\_text

## Mechanical and environmental data

Degree of protection*	ip68
Operating temperature	40_120_c
Mating cycles	5000

mated

## Material and surface treatments

Housing	m_chrome
Contact	cu_alloy_gold

safety\_text\_2  
ul\_text  
illustrative\_text