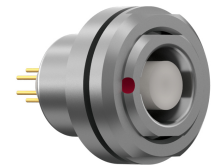


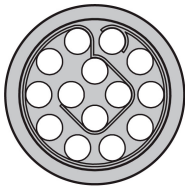
## General information

Part number	GA2LFC-P14QF00-0000
Termination	pcb
Size	2
Locking principle	break , push
Coding	f_key

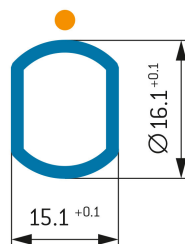


Illustrations may differ from original product.  
Dimensions, unless otherwise specified, in mm.

## POSITIONS: 14 Positions



## PANEL CUT OUT:



The pin layout corresponds to the view on the termination area

## Contact insert description

Number of contacts	14
Contact type	sockets
Contact diameter	07mm
Insulator material	peek
Termination	pcb
Termination diameter	05mm

reverse\_gender\_on\_request

## Technical information

Max. creepage and air clearance distance	09_mm	12_mm
Nominal current single contact	06_a	iec_60512_5_2
Nominal current insert	3 A	vde_0298_4
Test voltage	12_kv_ac	sae_13441

safety\_text

## Mechanical and environmental data

Degree of protection*	ip50
-----------------------	------

Operating temperature	40_120_c
-----------------------	----------

Mating cycles	5000
---------------	------

mated\_unmated

## Material and surface treatments

Housing	m_chrome
---------	----------

Contact	cu_alloy_gold
---------	---------------

safety\_text\_2

ul\_text

illustrative\_text