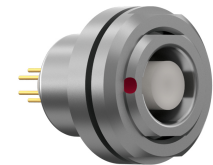


General information

Part number	GA1LOC-P08QF00-0000
Termination	pcb
Size	1
Locking principle	break , push
Coding	0_key



Illustrations may differ from original product.  
Dimensions, unless otherwise specified, in mm.

**CODING:** 0°

**POSITIONS:** 8 Positions

**PANEL CUT OUT:**

**PCB-LAYOUT:**

The pin layout corresponds to the view on the termination area

Contact insert description

Number of contacts	8
Contact type	sockets
Contact diameter	07mm
Insulator material	peek
Termination	pcb
Termination diameter	05mm

reverse\_gender\_on\_request

Technical information

Max. creepage and air clearance distance	06_mm	11_mm
Nominal current single contact	06_a	iec_60512_5_2
Nominal current insert	3,9 A	vde_0298_4
Test voltage	1_kv_ac	sae_13441

safety\_text

## Mechanical and environmental data

Degree of protection*	ip50
-----------------------	------

Operating temperature	40_120_c
-----------------------	----------

Mating cycles	5000
---------------	------

mated\_unmated

## Material and surface treatments

Housing	m_chrome
---------	----------

Contact	cu_alloy_gold
---------	---------------

safety\_text\_2

ul\_text

illustrative\_text