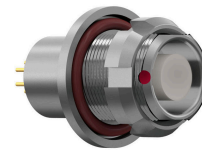


General information

Part number	G82LOC-P12LFD0-0000
Termination	solder
Size	2
Locking principle	break , push
Coding	0_key



Illustrations may differ from original product. Dimensions, unless otherwise specified, in mm.

**CODING:** 0°

**POSITIONS:** 12 positions

**PANEL CUT OUT:**

**DIMENSIONS:**

The pin layout corresponds to the view on the termination area

Contact insert description

Number of contacts	12
Contact type	sockets
Contact diameter	07mm
Insulator material	peek
Wire cross section	26_awg
Termination	solder
Termination diameter	065mm

reverse\_gender\_on\_request

Technical information

Max. creepage and air clearance distance	10_mm	13_mm
Nominal current single contact	06_a	iec_60512_5_2
Nominal current insert	3,3 A	vde_0298_4
Test voltage	135_kv_ac	sae_13441

safety\_text

Mechanical and environmental data

Degree of protection*	ip68
Operating temperature	40_120_c
Mating cycles	5000

unmated

### Material and surface treatments

<b>Housing</b>	m_chrome
<b>Contact</b>	cu_alloy_gold

safety\_text\_2  
ul\_text  
illustrative\_text