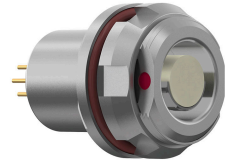


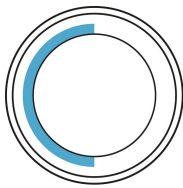
General information

Part number	G82F1C-P09LM00-0000
Termination	solder
Size	2
Locking principle	break , push
Coding	1_halfshell

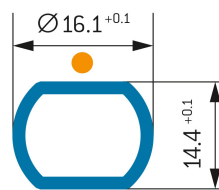


Illustrations may differ from original product.
Dimensions, unless otherwise specified, in mm.

CODING:1



PANEL CUT OUT:



Contact insert description

Number of contacts	9
Contact type	sockets
Contact diameter	8_09_1_13mm
Insulator material	peek
Wire cross section	22_awg_20_awg
Termination	solder
Termination diameter	085mm11mm

reverse_gender_on_request

Technical information

Max. creepage and air clearance distance	08_18_mm	08_38_mm
Nominal current single contact	075_12_a	iec_60512_5_2
Test voltage	135_21_kv_ac	sae_13441

safety_text

Mechanical and environmental data

Degree of protection*	ip68
Operating temperature	40_120_c
Mating cycles	5000

mated_unmated

Material and surface treatments

Housing	m_chrome
Contact	cu_alloy_gold

safety_text_2
ul_text
illustrative_text