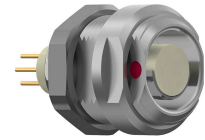


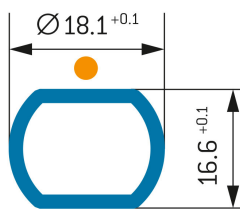
## General information

Part number	G53F2C-P16QM00-0000
Termination	pcb
Size	3
Locking principle	break , push
Coding	2_halfshell



Illustrations may differ from original product.  
Dimensions, unless otherwise specified, in mm.

## PANEL CUT OUT:



## Contact insert description

Number of contacts	16
Contact type	sockets
Contact diameter	12_07_4_16mm
Insulator material	peek
Termination	pcb
Termination diameter	05mm07mm

reverse\_gender\_on\_request

## Technical information

Max. creepage and air clearance distance	10_15_mm	07_25_mm
Nominal current single contact	6_21_a	iec_60512_5_2
Test voltage	09_15_kv_ac	sae_13441

safety\_text

## Mechanical and environmental data

Degree of protection*	ip50
Operating temperature	40_120_c
Mating cycles	5000

mated\_unmated

## Material and surface treatments

<b>Housing</b>	m_chrome
<b>Contact</b>	cu_alloy_gold

safety\_text\_2  
ul\_text  
illustrative\_text