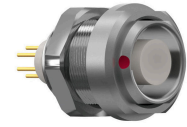


G52LOC-P06MPH0-0000
series_l, type_g5



General information

Part number	G52LOC-P06MPH0-0000
Termination	solder
Size	2
Locking principle	break , push
Coding	0_key



Illustrations may differ from original product.
 Dimensions, unless otherwise specified, in mm.

<p>CODING: 0°</p>	<p>POSITIONS: 6 positions</p>	<p>PANEL CUT OUT:</p>	<p>DIMENSIONS:</p>
--------------------------	--------------------------------------	------------------------------	---------------------------

The pin layout corresponds to the view on the termination area

Contact insert description

Number of contacts	6
Contact type	pins
Contact diameter	13mm
Insulator material	peek
Wire cross section	20_awg
Termination	solder
Termination diameter	11mm

reverse_gender_on_request

Technical information

Max. creepage and air clearance distance	13_mm	15_mm
Nominal current single contact	12_a	iec_60512_5_2
Nominal current insert	9 A	vde_0298_4
Test voltage	15_kv_ac	sae_13441

safety_text

Mechanical and environmental data

Degree of protection*	ip50
Operating temperature	40_120_c
Mating cycles	5000

mated_unmated

Material and surface treatments

Housing	m_chrome
Contact	cu_alloy_gold

safety_text_2
ul_text
illustrative_text