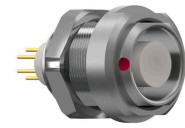


General information

Part number	G52LOC-P04RP00-0000
Termination	pcb
Size	2
Locking principle	break , push
Coding	0_key



Illustrations may differ from original product.
Dimensions, unless otherwise specified, in mm.

CODING: 0°

POSITIONS: 4 Positions

PANEL CUT OUT:

DIMENSIONS:

The pin layout corresponds to the view on the termination area

Contact insert description

Number of contacts	4
Contact type	pins
Contact diameter	13mm
Insulator material	peek
Termination	pcb
Termination diameter	07mm
Data transmission	ethernet_100

reverse_gender_on_request

Technical information

Max. creepage and air clearance distance	18 mm	16 mm
Nominal current single contact	12_a	iec_60512_5_2
Nominal current insert	12 A	vde_0298_4
Test voltage	195_kv_ac	sae_13441

safety_text

Mechanical and environmental data

Degree of protection*	ip50
Operating temperature	40_120_c
Mating cycles	5000

mated_unmated

Material and surface treatments

Housing	m_chrome
Contact	cu_alloy_gold

safety_text_2
data_text
ul_text
illustrative_text