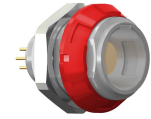
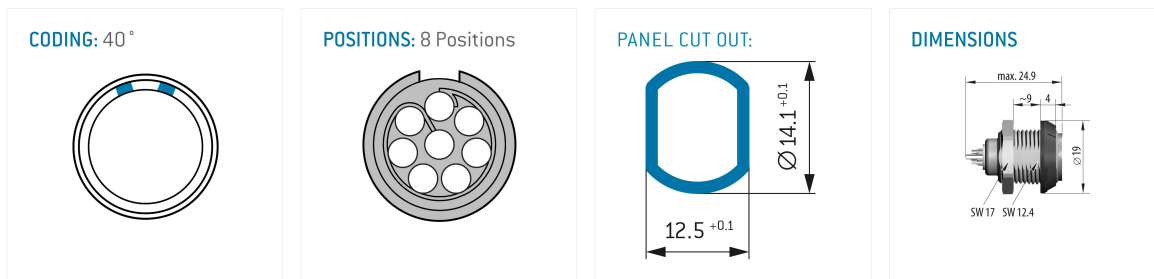


## General information

|                   |                     |
|-------------------|---------------------|
| Part number       | G51MA7-P08LFD0-0020 |
| Termination       | solder              |
| Size              | 1                   |
| Locking principle | break , push        |
| Coding            | a_key_medi          |



Illustrations may differ from original product.  
Dimensions, unless otherwise specified, in mm.



The pin layout corresponds to the view on the termination area

## Contact insert description

|                      |         |
|----------------------|---------|
| Number of contacts   | 8       |
| Contact type         | sockets |
| Contact diameter     | 07mm    |
| Insulator material   | peek    |
| Wire cross section   | 26_awg  |
| Termination          | solder  |
| Termination diameter | 065mm   |

reverse\_gender\_on\_request

## Technical information

|  |           |                       |
|--|-----------|-----------------------|
| Max. creepage and air clearance distance | 06_mm     | iec_60601_1mopp_2moop |
| Nominal current single contact           | 06_a      | iec_60512_5_2         |
| Nominal current insert                   | 3,9 A     | vde_0298_4            |
| Test voltage                             | 095_kv_ac | eia_364_20f           |

safety\_text  
iec\_60601\_receptacle

## Mechanical and environmental data

|                       |          |
|-----------------------|----------|
| Degree of protection* | ip50     |
| Operating temperature | 50_120_c |
| Mating cycles         | 5000     |

mated\_unmated

## Insulator materials MEDI-SNAP®

psu\_peek\_o\_a

## Material and surface treatments

|              |               |
|--------------|---------------|
| Housing      | psu_gray      |
| Color option | red           |
| Contact      | cu_alloy_gold |

safety\_text\_2  
ul\_text  
illustrative\_text