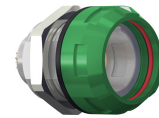
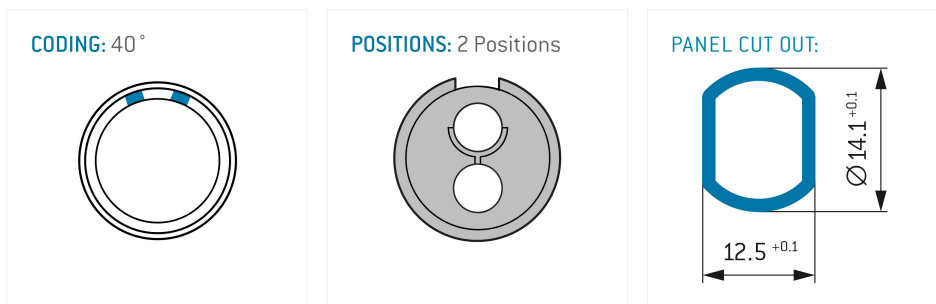


## General information

Part number	G41MA7-P02LPH0-0050
Termination	solder
Size	1
Locking principle	break , push
Coding	a_key_medi



Illustrations may differ from original product.  
Dimensions, unless otherwise specified, in mm.



The pin layout corresponds to the view on the termination area

## Contact insert description

Number of contacts	2
Contact type	sockets
Contact diameter	13mm
Insulator material	peek
Wire cross section	20_awg
Termination	solder
Termination diameter	11mm

reverse\_gender\_on\_request

## Technical information

Max. creepage and air clearance distance	13_mm	iec_60601_2mopp_2moop
Nominal current single contact	12_a	iec_60512_5_2
Nominal current insert	12 A	vde_0298_4
Test voltage	14_kv_ac	eia_364_20f

safety\_text

iec\_60601\_receptacle

## Mechanical and environmental data

Degree of protection*	ip67
Operating temperature	50_120_c
Mating cycles	5000

mated\_g4\_a5\_unmated

## Insulator materials MEDI-SNAP®

psu\_peek\_o\_a

## Material and surface treatments

Housing	psu_gray
Color option	green
Contact	cu_alloy_gold

safety\_text\_2

ul\_text

illustrative\_text