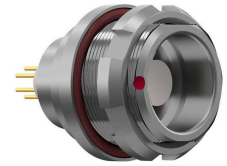


General information

|                   |                     |
|-------------------|---------------------|
| Part number       | G32K0C-P10NJG0-0000 |
| Termination       | crimp               |
| Size              | 2                   |
| Locking principle | break , push        |
| Coding            | 0_key               |



Illustrations may differ from original product. Dimensions, unless otherwise specified, in mm.

**CODING:** 0°

**POSITIONS:** 10 Positions

**PANEL CUT OUT:**

**DIMENSIONS:**

The pin layout corresponds to the view on the termination area

Contact insert description

|                    |           |
|--------------------|-----------|
| Number of contacts | 10        |
| Contact type       | sockets   |
| Contact diameter   | 09mm      |
| Insulator material | peek      |
| Wire cross section | 22-26_awg |
| Termination        | crimp     |

reverse\_gender\_on\_request

Technical information

|  |          |               |
|--|----------|---------------|
| Max. creepage and air clearance distance | 10_mm    | 09_mm         |
| Nominal current single contact           | 075_a    | iec_60512_5_2 |
| Nominal current insert                   | 4,125 A  | vde_0298_4    |
| Test voltage                             | 15_kv_ac | sae_13441     |

safety\_text

Mechanical and environmental data

|                       |          |
|-----------------------|----------|
| Degree of protection* | ip68     |
| Operating temperature | 40_120_c |
| Mating cycles         | 5000     |

mated

## Material and surface treatments

|                |               |
|----------------|---------------|
| <b>Housing</b> | m_chrome      |
| <b>Contact</b> | cu_alloy_gold |

safety\_text\_2  
ul\_text  
illustrative\_text