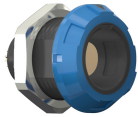


## receptacle\_with\_break\_away\_and\_push\_pull\_locking\_for\_front\_panel\_mounting

size: 1, IP50, keying: c, number\_of\_contacts: 8, solder\_cup, contact\_type: sockets, Signal



### Basic information

|                    |                      |
|--------------------|----------------------|
| Part number        | G11MC8-P08LFD0-0060  |
| Category           | connector            |
| Type of connector  | receptacle           |
| Assembly situation | front_panel_mounting |
| Size               | 1                    |

### Contact insert description

|                        |                             |
|------------------------|-----------------------------|
| Special features       | iec_60601_1_1_mopp_&_2_moop |
| Transmission type      | Signal                      |
| Number of contacts     | 8                           |
| Contact type           | sockets                     |
| Contact diameter       | 0.7 mm                      |
| Termination type       | solder_cup                  |
| Termination diameter   | 0.65 mm                     |
| Wire cross section AWG | AWG 26                      |

### Technical information

|  |                             |  |
|--|-----------------------------|--|
| Nominal current single contact               | 6 A                         | IEC 60512-5-2:2002 (DIN EN 60512-5-2:2003) |
| Max. current insert                          | 3.9                         | VDE 0298-4:2003                            |
| Test voltage                                 | 0.95 kV AC                  | EIA-364-20F:2019-02                        |
| Max. creepage distance (contact to contact)  | 0.6 mm (Contact to housing) |  |
| Max. creepage distance (contact to housing)  | IEC 60601-1: 1MOPP, 2MOOP*  |  |
| Max. clearance distance (contact to contact) | 0.6 mm (Contact to contact) |  |
| Max. clearance distance (contact to housing) | IEC 60601-1: 1MOPP, 2MOOP*  |  |

## Mechanical and environmental data

|                            |                        |
|----------------------------|------------------------|
| Locking principle          | break_away , push_pull |
| Keying                     | c                      |
| Mating cycles              | 5000                   |
| IP class                   | IP50                   |
| Max. operating temperature | 120 °C                 |
| Min. operating temperature | 50 °C                  |

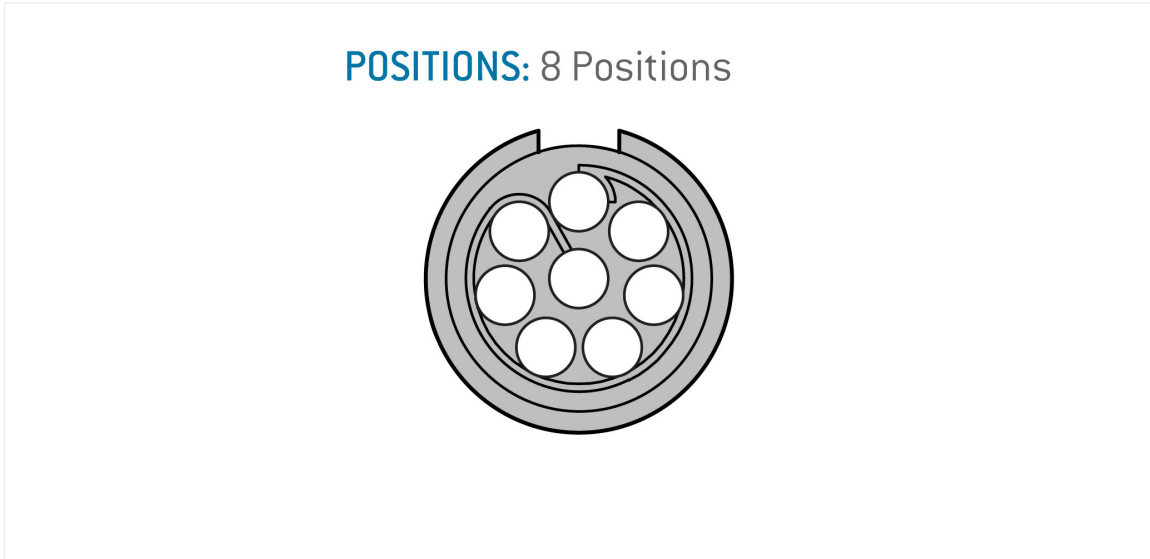
## Material and surface treatments

|                                  |                           |
|----------------------------------|---------------------------|
| Material                         | psu_black                 |
| Insulator material               | peek                      |
| Contact material                 | cu_alloy_with_gold_finish |
| Color option (Front or back nut) | blue                      |

## Insulator materials MEDI-SNAP®

psu\_peek\_o\_a

Graphics and technical drawings



## Further technical information and downloads

[3D-File \(STP File\)](#)