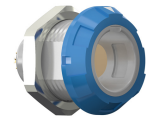


General information

Part number	G11MC7-P02LPH0-0060
Termination	solder
Size	1
Locking principle	break , push
Coding	c_key_medi



Illustrations may differ from original product.
Dimensions, unless otherwise specified, in mm.

<p>CODING: 60°</p>	<p>POSITIONS: 2 Positions</p>	<p>PANEL CUT OUT:</p>	<p>DIMENSIONS</p>
---------------------------	--------------------------------------	------------------------------	--------------------------

The pin layout corresponds to the view on the termination area

Contact insert description

Number of contacts	2
Contact type	sockets
Contact diameter	13mm
Insulator material	peek
Wire cross section	20_awg
Termination	solder
Termination diameter	11mm

reverse_gender_on_request

Technical information

Max. creepage and air clearance distance	13_mm	iec_60601_1mopp_2moop
Nominal current single contact	12_a	iec_60512_5_2
Nominal current insert	12 A	vde_0298_4
Test voltage	14_kv_ac	eia_364_20f

safety_text
iec_60601_receptacle

Mechanical and environmental data

Degree of protection*	ip50
Operating temperature	50_120_c
Mating cycles	5000

mated_unmated

Insulator materials MEDI-SNAP®

psu_peek_o_a

Material and surface treatments

Housing	psu_gray
Color option	blue
Contact	cu_alloy_gold

safety_text_2
ul_text
illustrative_text