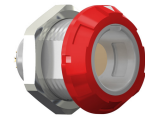


**G11M07-P10LCC0-0020**  
**medi\_snap, type\_g1**



**General information**

<b>Part number</b>	G11M07-P10LCC0-0020
<b>Termination</b>	solder
<b>Size</b>	1
<b>Locking principle</b>	break , push
<b>Coding</b>	0_key



Illustrations may differ from original product.  
 Dimensions, unless otherwise specified, in mm.

<p><b>CODING:</b> 0°</p>	<p><b>POSITIONS:</b> 10 Positions</p>	<p><b>PANEL CUT OUT:</b></p>	<p><b>DIMENSIONS</b></p>
--------------------------	---------------------------------------	------------------------------	--------------------------

The pin layout corresponds to the view on the termination area

**Contact insert description**

<b>Number of contacts</b>	10
<b>Contact type</b>	sockets
<b>Contact diameter</b>	05mm
<b>Insulator material</b>	peek
<b>Wire cross section</b>	28_awg
<b>Termination</b>	solder
<b>Termination diameter</b>	045mm

reverse\_gender\_on\_request

**Technical information**

<b>Max. creepage and air clearance distance</b>	05_mm	iec_60601_1mopp_2moop
<b>Nominal current single contact</b>	04_a	iec_60512_5_2
<b>Nominal current insert</b>	2,2 A	vde_0298_4
<b>Test voltage</b>	06_kv_ac	eia_364_20f

safety\_text  
 iec\_60601\_receptacle

## Mechanical and environmental data

Degree of protection*	ip50
Operating temperature	50_120_c
Mating cycles	5000

mated\_unmated

## Insulator materials MEDI-SNAP®

psu\_peek\_o\_a

## Material and surface treatments

Housing	psu_gray
Color option	red
Contact	cu_alloy_gold

safety\_text\_2  
ul\_text  
illustrative\_text