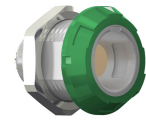


General information

| | |
|-------------------|---------------------|
| Part number | G11M07-P06LFD0-0050 |
| Termination | solder |
| Size | 1 |
| Locking principle | break , push |
| Coding | 0_key |



Illustrations may differ from original product.
Dimensions, unless otherwise specified, in mm.

CODING: 0°

POSITIONS: 6 Positions

PANEL CUT OUT:

DIMENSIONS

The pin layout corresponds to the view on the termination area

Contact insert description

| | |
|----------------------|---------|
| Number of contacts | 6 |
| Contact type | sockets |
| Contact diameter | 07mm |
| Insulator material | peek |
| Wire cross section | 26_awg |
| Termination | solder |
| Termination diameter | 065mm |

reverse_gender_on_request

Technical information

| | | |
|--|----------|-----------------------|
| Max. creepage and air clearance distance | 085_mm | iec_60601_1mopp_2moop |
| Nominal current single contact | 06_a | iec_60512_5_2 |
| Nominal current insert | 4,5 A | vde_0298_4 |
| Test voltage | 11_kv_ac | eia_364_20f |

safety_text
iec_60601_receptacle

Mechanical and environmental data

| | |
|-----------------------|----------|
| Degree of protection* | ip50 |
| Operating temperature | 50_120_c |
| Mating cycles | 5000 |

mated_unmated

Insulator materials MEDI-SNAP®

psu_peek_o_a

Material and surface treatments

| | |
|--------------|---------------|
| Housing | psu_gray |
| Color option | green |
| Contact | cu_alloy_gold |

safety_text_2
ul_text
illustrative_text