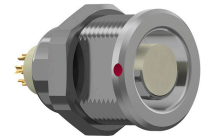


**G11F1C-P07LFDO-0000**  
 series\_f  
 type\_g1



**General information**

Part number	G11F1C-P07LFDO-0000
Termination	solder
Size	1
Locking principle	break , push
Coding	1_halfshell



Illustrations may differ from original product.  
 Dimensions, unless otherwise specified, in mm.

<p><b>CODING:</b>1</p>	<p><b>POSITIONS:</b> 7 positions</p>	<p><b>PANEL CUT OUT:</b></p>	<p><b>DIMENSIONS:</b></p>
------------------------	--------------------------------------	------------------------------	---------------------------

The pin layout corresponds to the view on the termination area

**Contact insert description**

Number of contacts	7
Contact type	sockets
Contact diameter	07mm
Insulator material	peek
Wire cross section	26_awg
Termination	solder
Termination diameter	065mm

reverse\_gender\_on\_request

**Technical information**

Max. creepage and air clearance distance	08_mm	08_mm
Nominal current single contact	06_a	iec_60512_5_2
Nominal current insert	3,9 A	vde_0298_4
Test voltage	12_kv_ac	sae_13441

safety\_text

**Mechanical and environmental data**

Degree of protection*	ip50
Operating temperature	40_120_c
Mating cycles	5000

mated\_unmated

### Material and surface treatments

<b>Housing</b>	m_chrome
<b>Contact</b>	cu_alloy_gold

safety\_text\_2  
ul\_text  
illustrative\_text