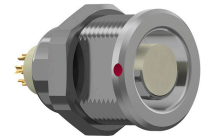


G11F1C-P06LFG0-0000
 series_f
 type_g1



General information

Part number	G11F1C-P06LFG0-0000
Termination	solder
Size	1
Locking principle	break , push
Coding	1_halfshell



Illustrations may differ from original product.
 Dimensions, unless otherwise specified, in mm.

<p>CODING:1</p>	<p>POSITIONS: 6 positions</p>	<p>PANEL CUT OUT:</p>	<p>DIMENSIONS:</p>
------------------------	--------------------------------------	------------------------------	---------------------------

The pin layout corresponds to the view on the termination area

Contact insert description

Number of contacts	6
Contact type	sockets
Contact diameter	07mm
Insulator material	peek
Wire cross section	22_awg
Termination	solder
Termination diameter	085mm

reverse_gender_on_request

Technical information

Max. creepage and air clearance distance	06_mm	08_mm
Nominal current single contact	075_a	iec_60512_5_2
Nominal current insert	5,625 A	vde_0298_4
Test voltage	1_kv_ac	sae_13441

safety_text

Mechanical and environmental data

Degree of protection*	ip50
Operating temperature	40_120_c
Mating cycles	5000

mated_unmated

Material and surface treatments

Housing	m_chrome
Contact	cu_alloy_gold

safety_text_2
ul_text
illustrative_text